



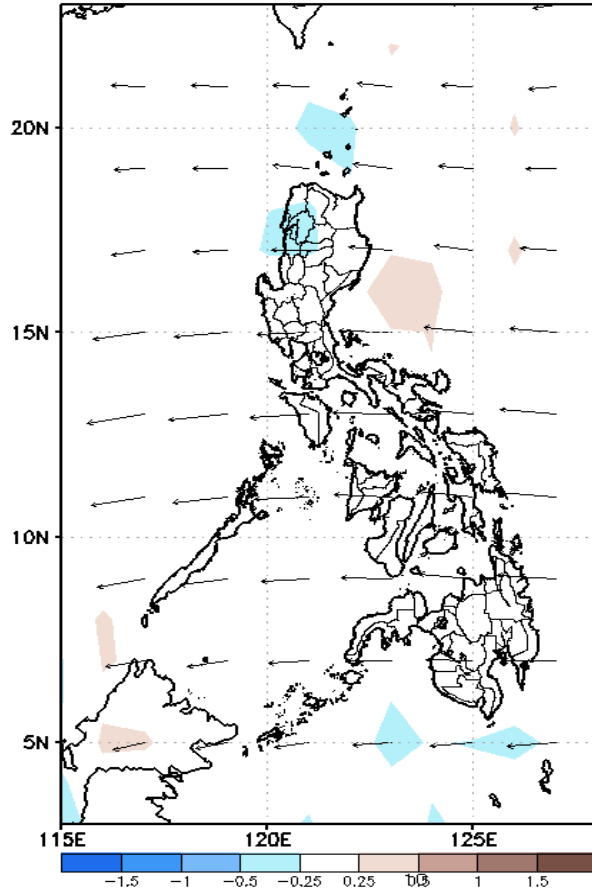
Week 1 & Week 2 Forecast for the Philippines using GEFS Model



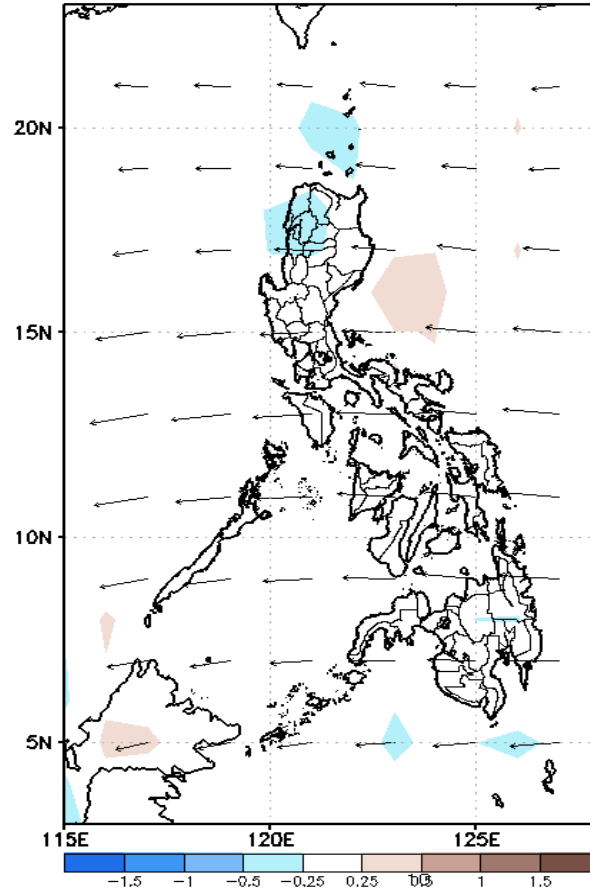
GEFS Week-1 Forecasts: Divergence & Wind Anomaly

Week 1: Aug 26-Sep 01, 2021

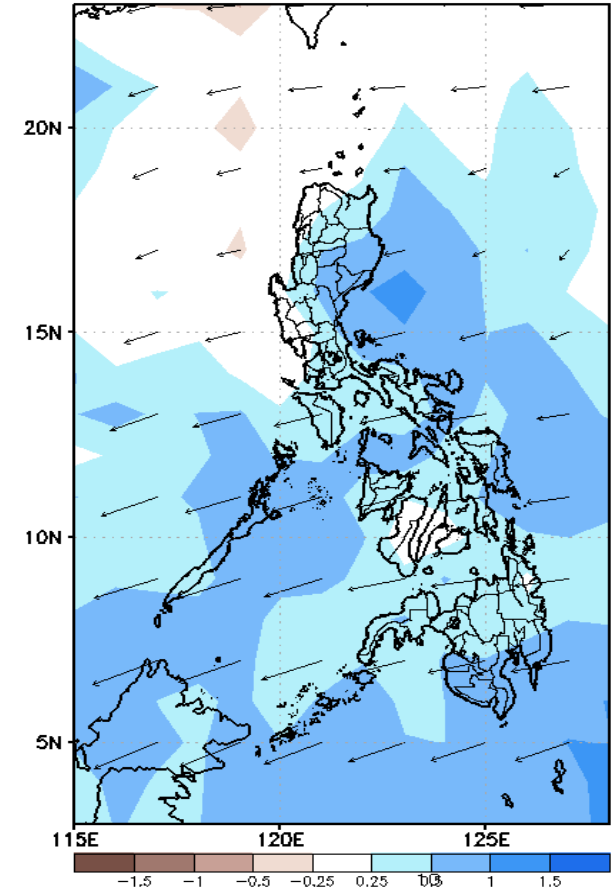
GEFS Week-1 850-hPa Divergence and Wind Anomom
Valid: 20210826 - 20210901



GEFS Week-1 700-hPa Divergence and Wind Anomom
Valid: 20210826 - 20210901



GEFS Week-1 200-hPa Divergence and Wind Anomom
Valid: 20210826 - 20210901

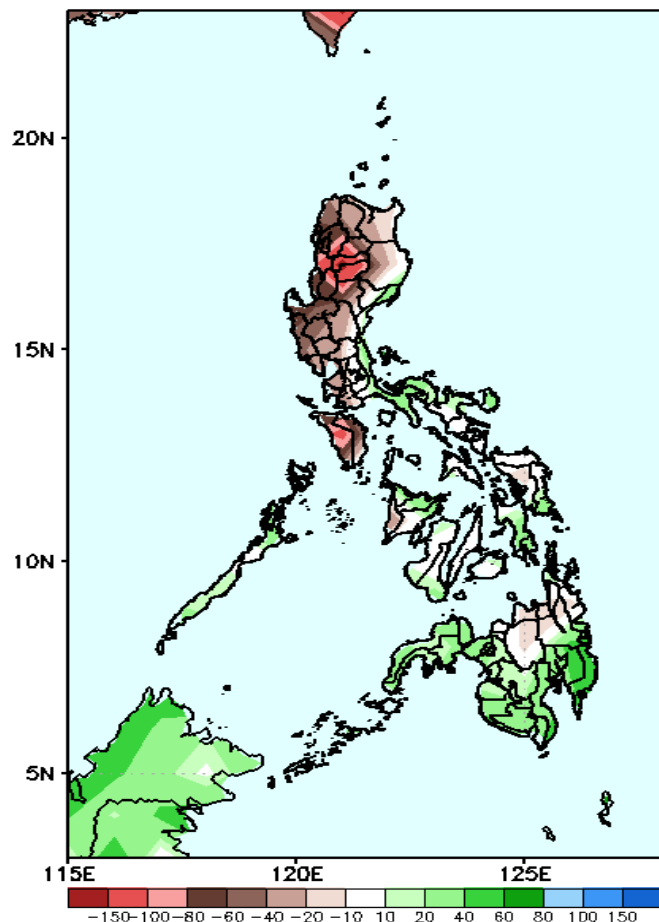


Upper and low level Divergence suggest likelihood of light precipitation in most parts of the country. Easterlies affecting most parts of the country attributing to light and moderate rains due to thunderstorms during the forecast period.

Precipitation Anomaly and Exceedance Probability > 25/50 mm

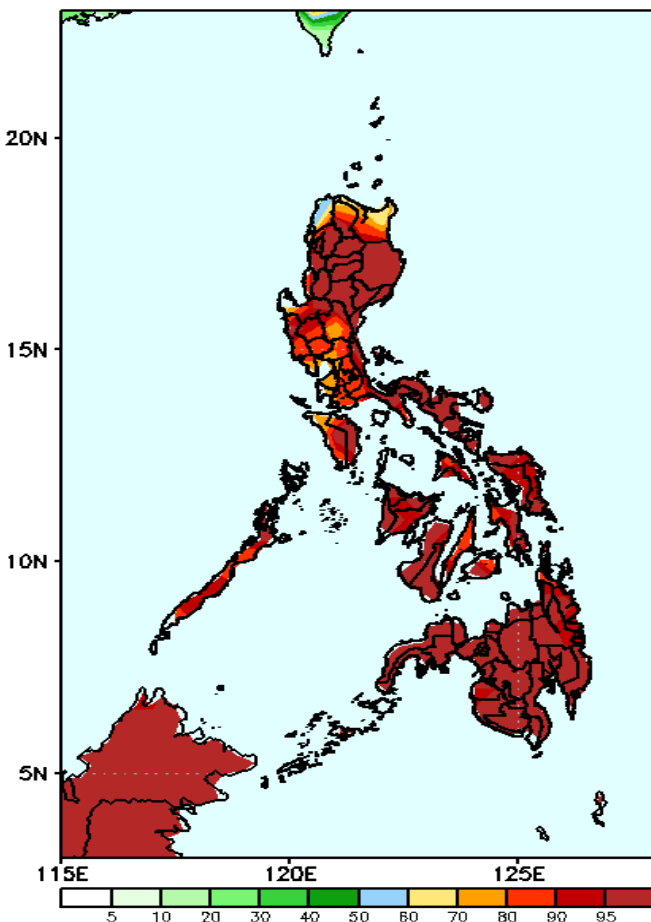
Week 1: Aug 26-Sep 01, 2021

GEFS Week-1 Precip Anomaly
Valid: 20210826 - 20210901



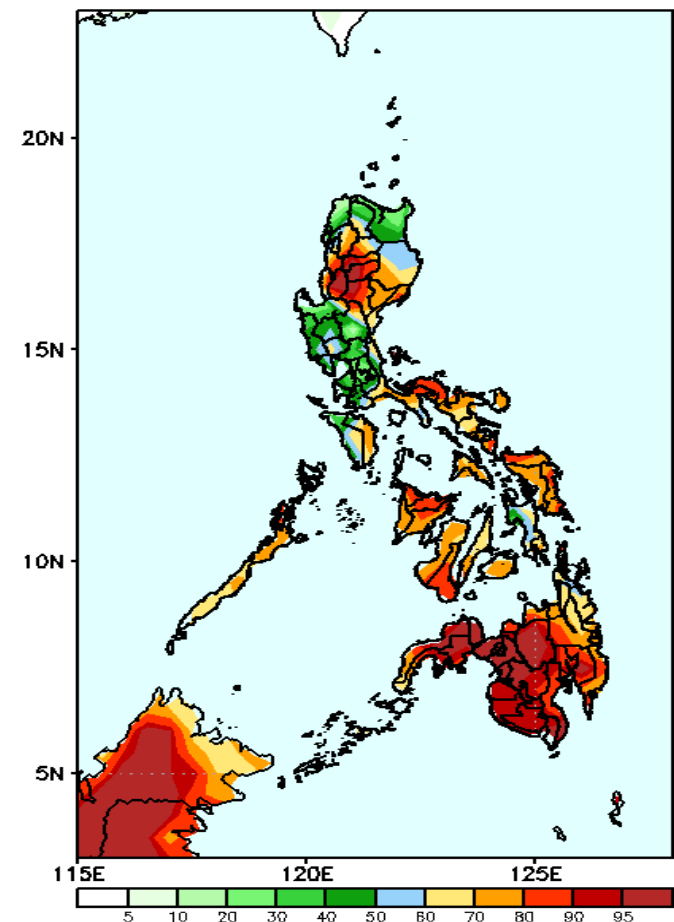
Rainfall deficit of 40-150mm is expected in most parts of Luzon (specially in Cordillera Region and Mindoro) while increase of rainfall of 40-80mm in most parts of Visayas and Mindanao during the forecast period

GEFS Week-1 Exceedance Prob. > 25mm
Valid: 20210826 - 20210901



High probability of rainfall to exceed 25mm in most parts of the country is expected during the forecast period.

GEFS Week-1 Exceedance Prob. > 50mm
Valid: 20210826 - 20210901

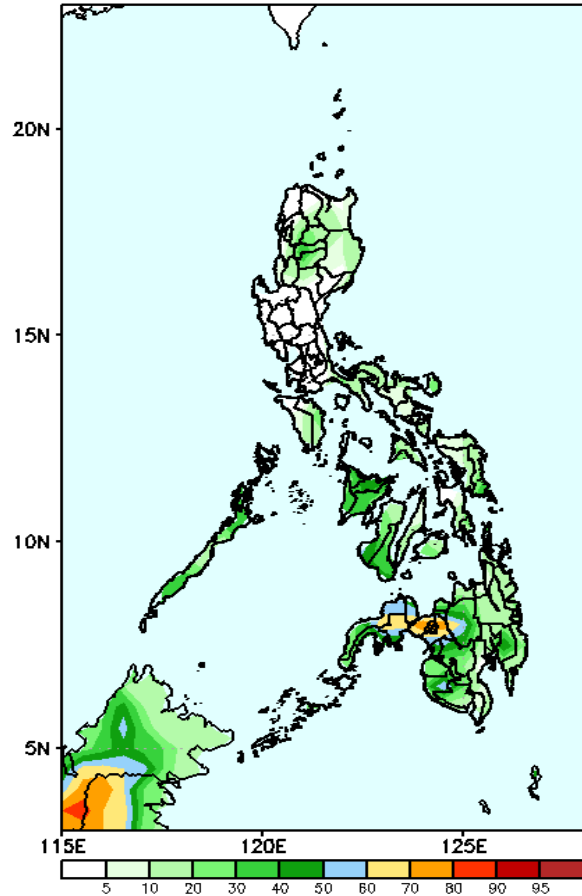


High probability of rainfall to exceed 50mm in most parts of the country except in Ilocos Norte, Apayao, Cagayan, Pangasinan, Central Luzon and CALABARZON during the forecast period.

Exceedance Probability > 100/150/200 mm

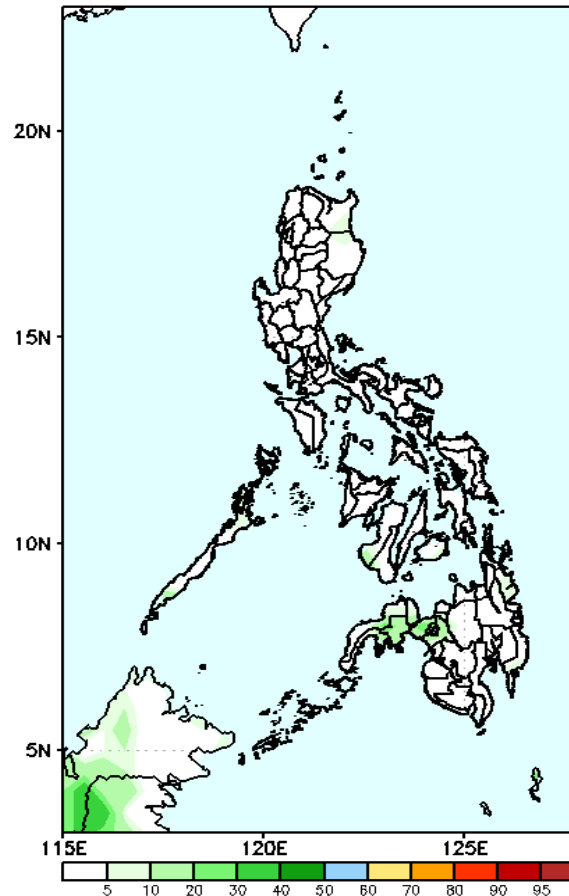
Week 1: Aug 26-Sep 01, 2021

GEFS Week-1 Exceedance Prob. > 100mm
Valid: 20210826 - 20210901



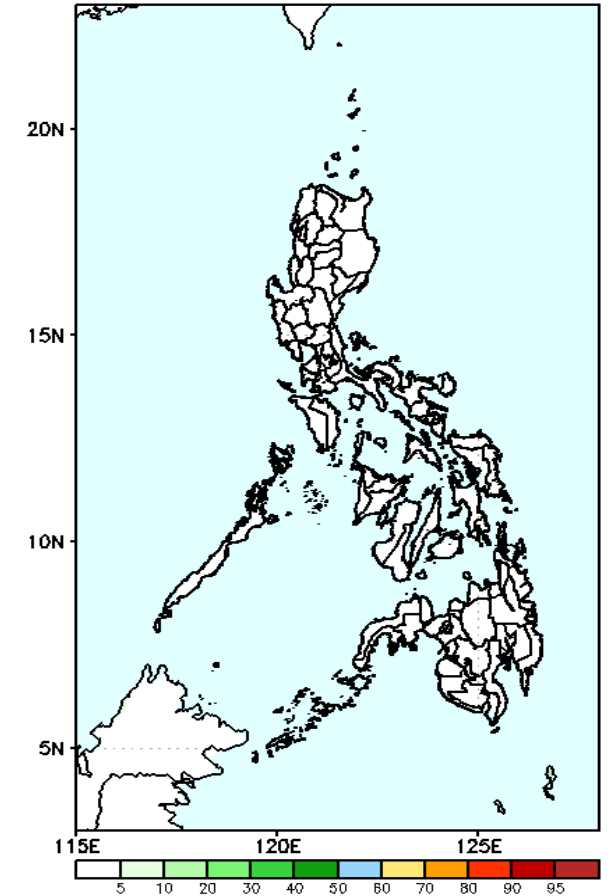
Less probability of rainfall to exceed 100mm in most parts of the country is expected except in Zamboanga del Sur and Lanao Provinces where there is 60-85% chance during the forecast period.

GEFS Week-1 Exceedance Prob. > 150mm
Valid: 20210826 - 20210901



Less probability of rainfall to exceed 150mm in most parts of the country is expected during the forecast period.

GEFS Week-1 Exceedance Prob. > 200mm
Valid: 20210826 - 20210901



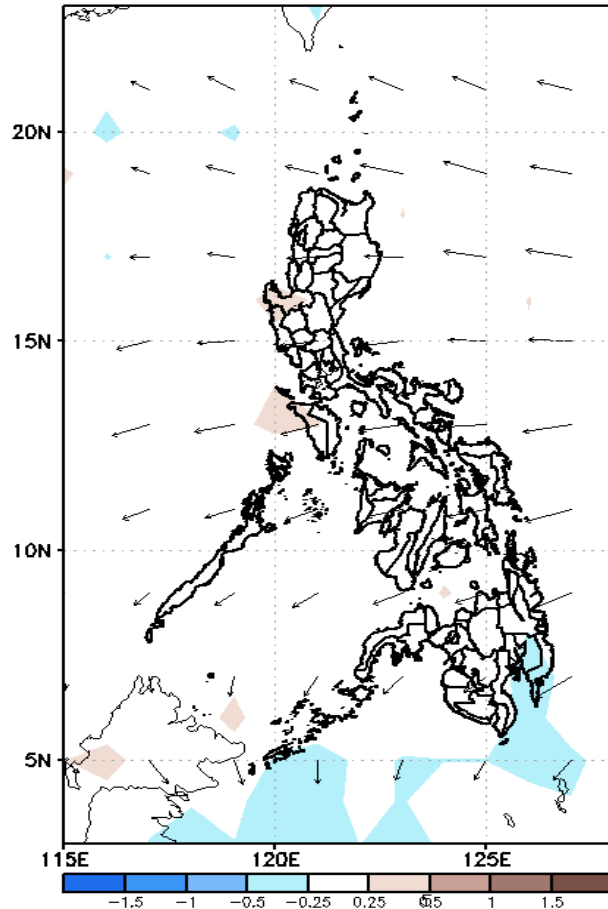
Less probability of rainfall to exceed 200mm in most parts of the country is expected during the forecast period.



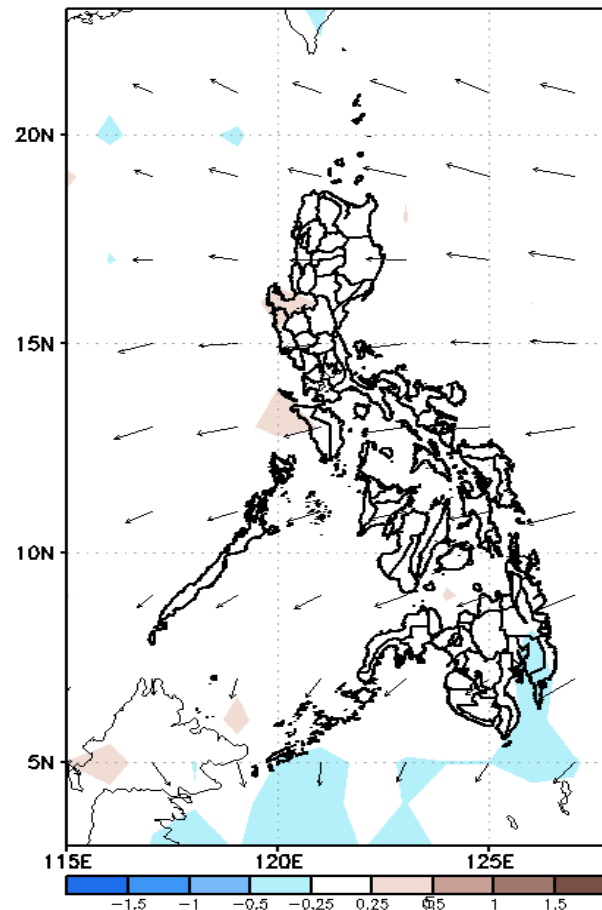
GEFS Week-2 Forecasts: Divergence & Wind Anomaly

Week 2: Sep 02-08, 2021

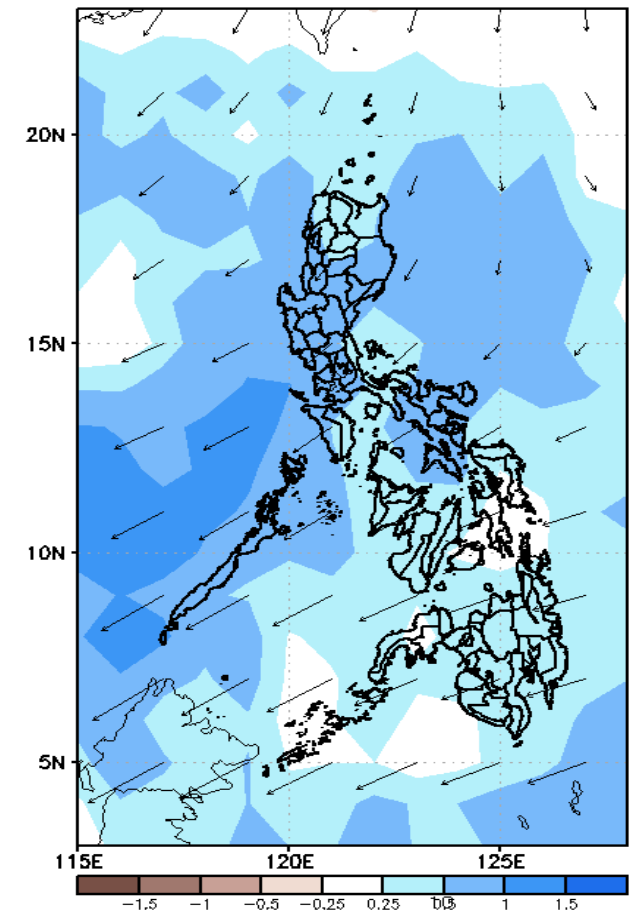
GEFS Week-2 850-hPa Divergence and Wind Anom
Valid: 20210902 - 20210908



GEFS Week-2 700-hPa Divergence and Wind Anom
Valid: 20210902 - 20210908



GEFS week-2 200-hPa Divergence and Wind Anom
Valid: 20210902 - 20210908

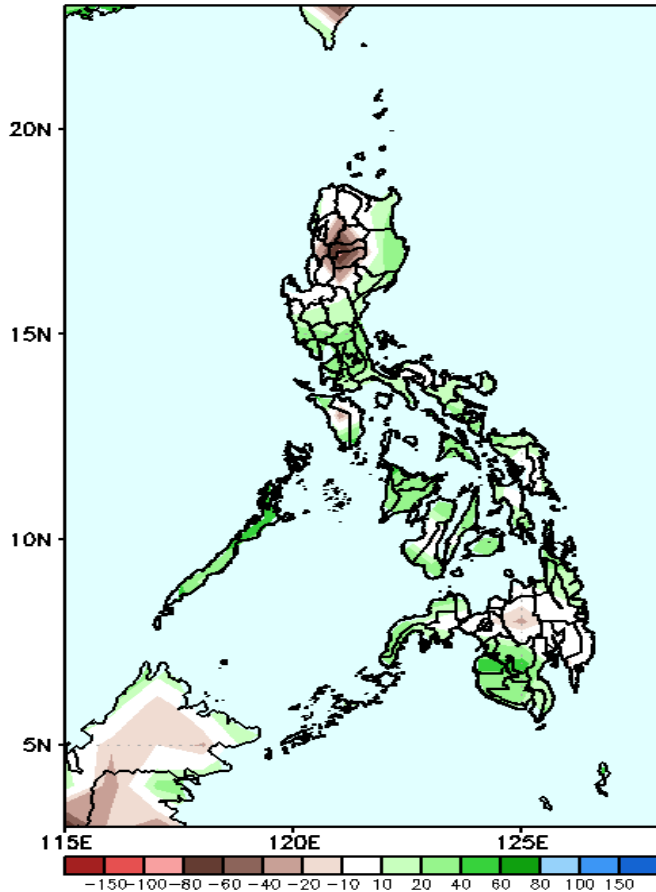


Upper and low level Divergence suggest likelihood of precipitation in most parts of the country. Southwest monsoon affecting parts of Western Luzon and Visayas while Easterlies affecting most parts of the country attributing to light and moderate rains due to thunderstorms during the forecast period.

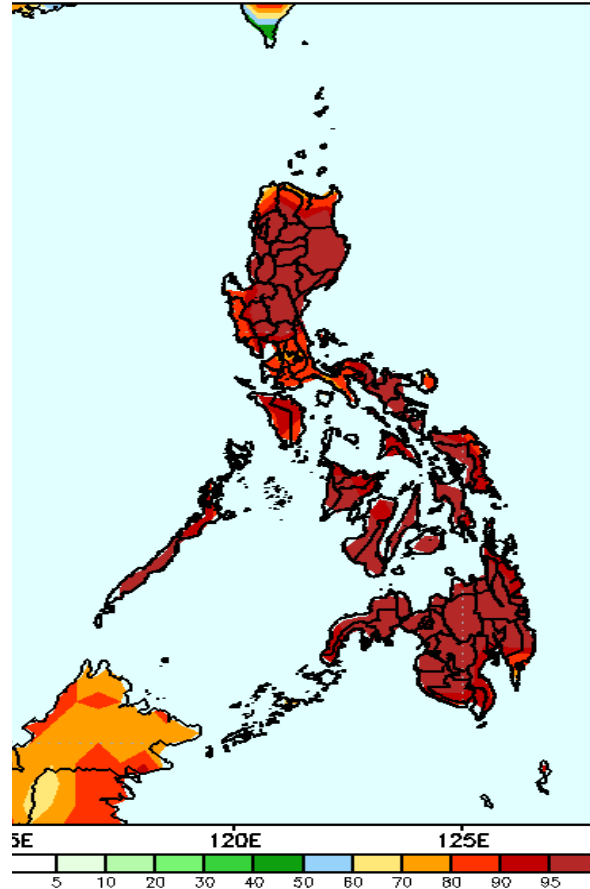
Precipitation Anomaly and Exceedance Probability > 25/50 mm

Week 2: Sep 02-08, 2021

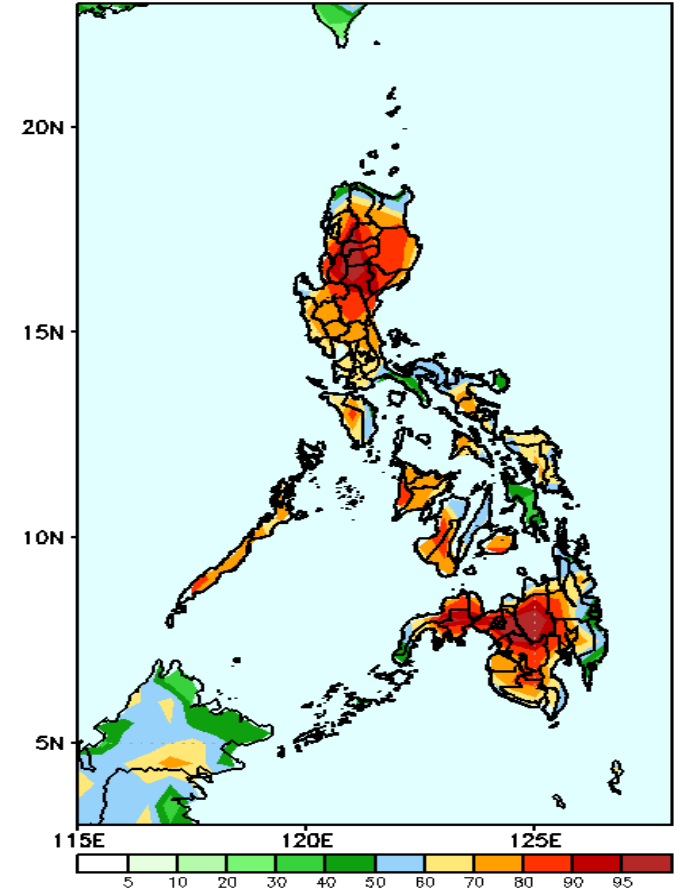
GEFS Week-2 Precip Anomaly
Valid: 20210902 - 20210908



GEFS Week-2 Exceedance Prob. > 25mm
Valid: 20210902 - 20210908



GEFS Week-2 Exceedance Prob. > 50mm
Valid: 20210902 - 20210908



Increase of rainfall of 40-80mm is expected in most parts of the country except in Cordillera Region where there is 40-80mm rainfall deficit during the forecast period.

High probability of rainfall to exceed 25mm in most parts of the country is expected during the forecast period

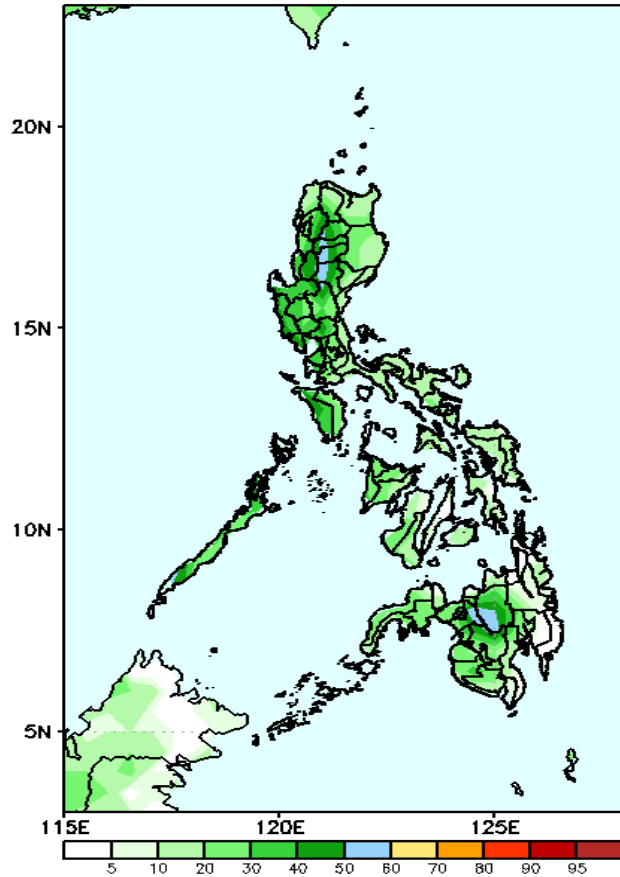
High probability of rainfall to exceed 50mm in most parts of the country is expected during the forecast period



Exceedance Probability > 100/150/200 mm

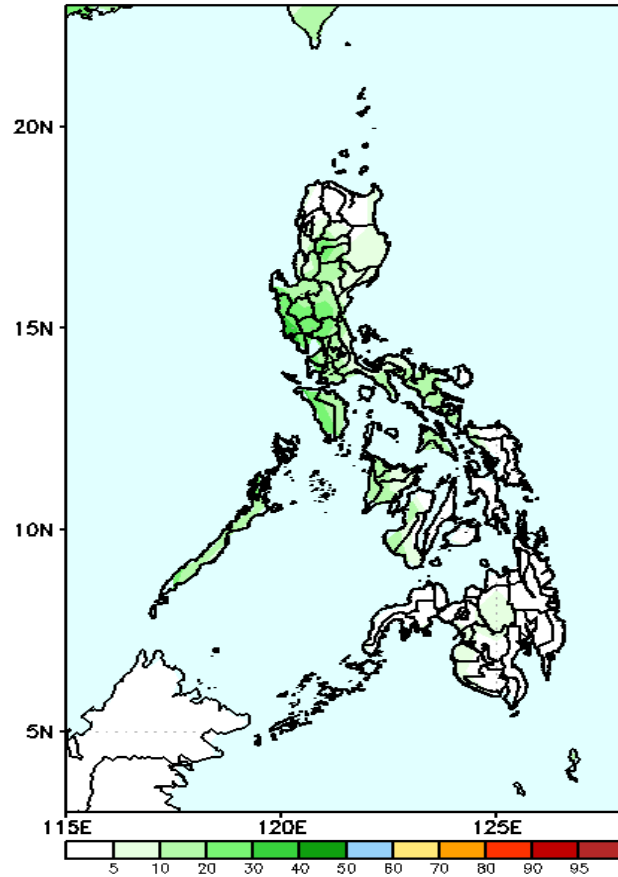
Week 2: Sep 02-08, 2021

GEFS Week-2 Exceedance Prob. > 100mm
Valid: 20210902 – 20210908



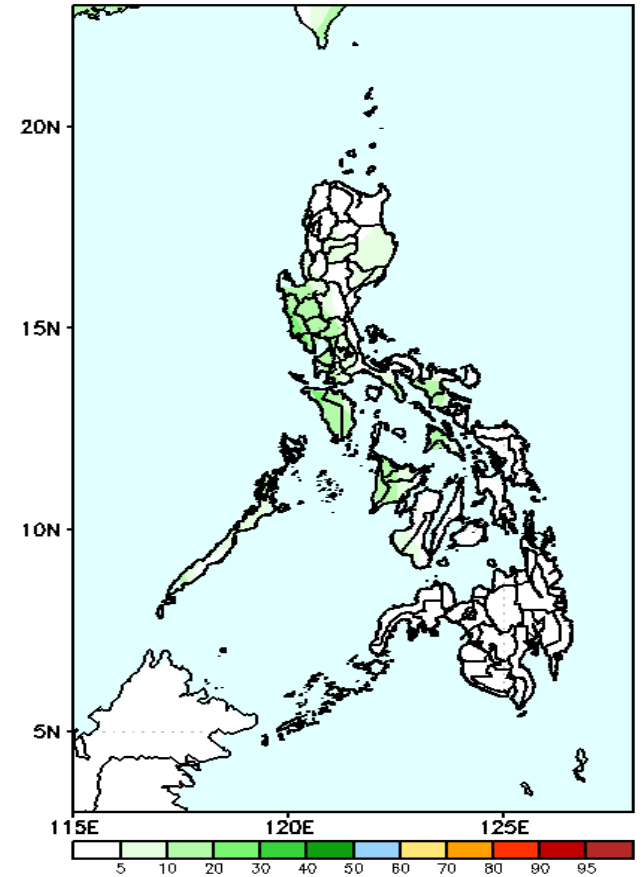
Less probability of rainfall to exceed 100mm in most parts of the country is expected during the forecast period.

GEFS Week-2 Exceedance Prob. > 150mm
Valid: 20210902 – 20210908



Less probability of rainfall to exceed 150mm in most parts of the country is expected during the forecast period.

GEFS Week-2 Exceedance Prob. > 200mm
Valid: 20210902 – 20210908

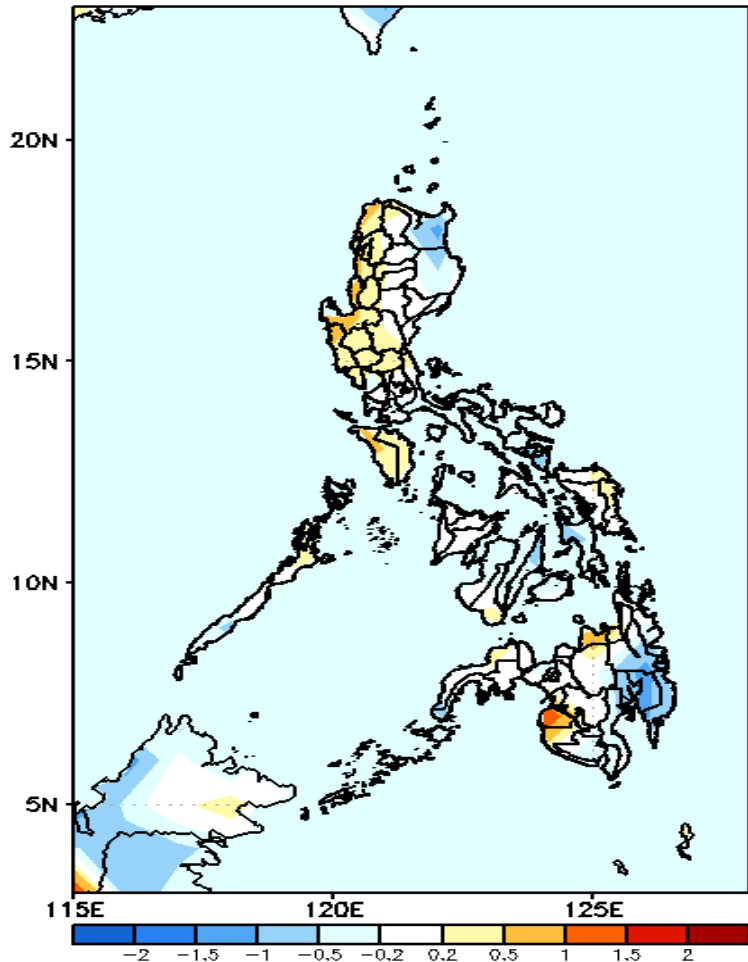


Less probability of rainfall to exceed 200mm in most parts of the country is expected during the forecast period.



GEFS Week-1 & 2 Forecasts: T2m Anomaly

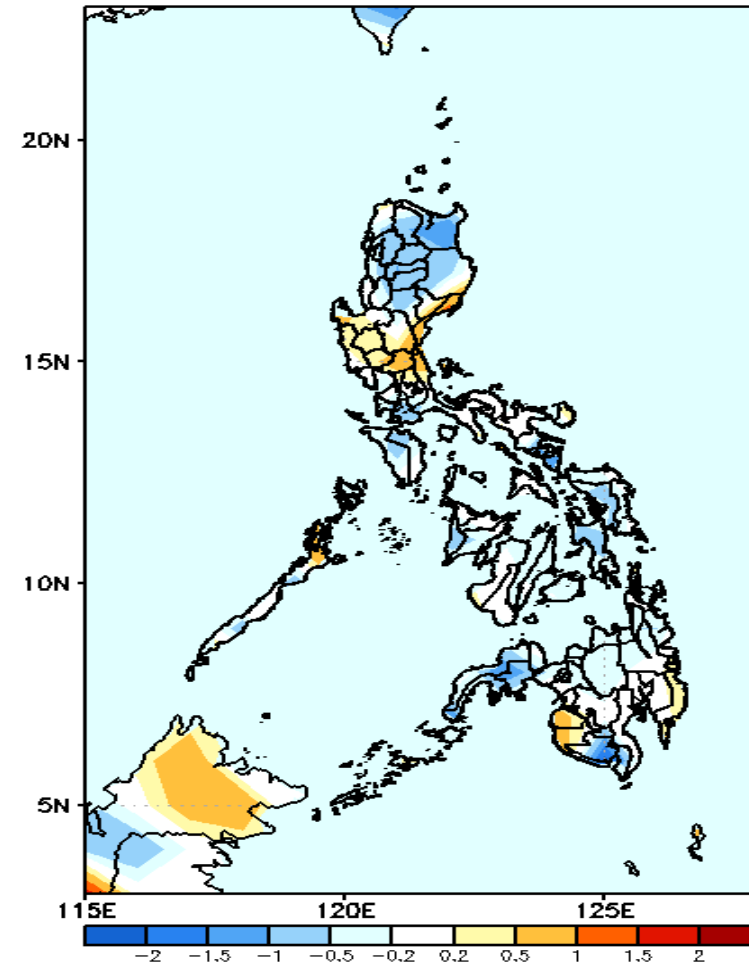
GEFS Week-1 T2m Anomaly
Valid: 20210826 - 20210901



2m Temperature Week 1: Aug 26-Sep 01, 2021

Average to slightly warmer average surface air temperature will likely experience in most parts of the country except in Cagayan and Davao Region where slightly cooler surface temperature is expected during the forecast period.

GEFS Week-2 T2m Anomaly
Valid: 20210902 - 20210908



2m Temperature Week 2: Sep 02-08, 2021

Slightly cooler to cooler than average surface air temperature will likely experience in most parts of the country except in Central Luzon, Maguindanao and Sultan Kudarat where slightly warmer surface temperature is expected during the forecast period.